

THE BROAD REACH

Volume 16, Number 2, August 2003

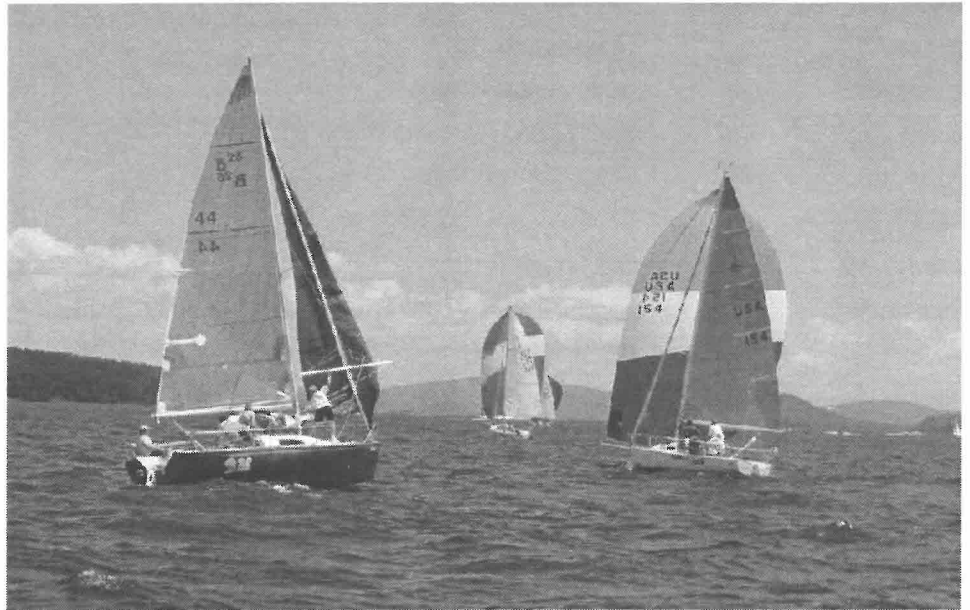
A Publication of The Lake Winnepesaukee Sailing Association

Commodore's Corner

by Al Posnack

We are almost midway through the boating season and, even with the late start that Mother Nature threw at us, a lot of good stuff has been happening:

- ◆ The youth sailing season is underway, with an outstanding staff and 160 students signed up for lessons.
- ◆ Our expanded scholarship program has given out eleven Freddy Richardson Scholarships to families needing assistance. Thanks to all who contributed.
- ◆ In spite of multiple appearances by Mr. Murphy (of Murphy's Law fame), the Memorial Day race was successfully run on the third try!
- ◆ The 32-foot Chris-Craft race committee boat is looking and running better than ever.
- ◆ We have received two more tax-deductible sailboat donations, and have sold a donated sailboat. These donations are allowing us to rebuild our capital fund after investing close to \$30,000 in youth sailing boats and equipment the last few years.
- ◆ A number of local businesses have provided important help in the form of financial contributions and donated services. Their business cards appear in this issue. You know how to thank them!
- ◆ Since the LWSA is no better than its members, it's great to see a number of new members this season, new racers and new volunteers. Looking forward to seeing YOU as well. Good sailing!



Racing Class on a downwind leg.

Thank You, Thank You, Thank You

Our old Chris Craft is being kept afloat by the efforts of a number of volunteers, including:

Steve Coneys, who took overall charge of commissioning the boat for the season.
Al Herte, who did some excellent woodwork repairs.
Paul Delgado, who has invested time and expertise to keep the engines running.
Bob Knowles, who set up the starting signal system and got the electronics working.

Also Thanks to:

Jack Stephenson and Jason Kephart, for being race committee for the Thursday night J80 One Design Racing.
Parents, Grandparents and Friends, for helping make the Youth Program's Wednesday nights a grand time.
Many members and friends, for signing up to be members and in many cases making donations that will further the work to keep sailing a big part of our lake community.



14th Annual LWSA Regatta

Saturday and Sunday, August 23 and 24

Buoy Racing on Saturday

Long Distance Island Race on Sunday

Compete either day or both - Separate awards for each day. Social gathering Saturday evening

Full details inside.

**Lake Winnepesaukee Sailing Association
& Winnepesaukee Yacht Club
2003 Schedule of Sailing Events**

<u>Date</u>	<u>Sponsor</u>	<u>Event</u>
Sunday 5/25	LWSA	Glendale Tavern Memorial Day Cup
Saturday 6/7		Open Format Race
Saturday 6/21		Open Format Race
Sunday 7/6	WYC	Jimmy Fund Race and charity auction
Friday 7/18	WYC	Single Handed Race
7/19 & 7/20	WYC	Commodore's Cup Regatta
Saturday 8/9	LWSA	Old Timers' Race
Saturday 8/23	LWSA	LWSA Regatta - Buoy Racing
Sunday 8/24	LWSA	LWSA Regatta (Island Race)
Friday 8/29	LWSA	Frying Pan Race (double handed)
Saturday 9/6	WCYC	Wolfeboro Bay Regatta
9/13 & 14	BOTH	J-Jamboree North
Saturday 9/20	LWSA	Pierson, Beneteau, Catalina, J-Cruiser Event
Sunday 10/5	WYC	Cold Duck Race

Regular weekly events:

The following events will be held each week.

The LWSA will run regular Wednesday Dinghy Races and Clinics between 6/25 & 8/20 (Lasers, Radials, 420's & Opti's) 5:30 PM

The WYC will run regular Friday Night PHRF races between 5/30 & 9/26

The LWSA will run one design races on Thursday nights between 5/22 and 8/14

Racing Update

As we move into August, the racing events begin to come together with an ever increasing frequency. Here's hoping you can get out for as many as is possible.

On Saturday, August 9th we will welcome back all those "Big Boats and Old Timers". No fees, no skipper's meeting. Just let us know you are coming and we will meet out on the water. Find the details elsewhere in this issue and on the LWSA website at www.lwsa.org.

Put aside the weekend of August 23rd and 24th for the LWSA Regatta. This is the long running Labor Day event moved up a week. We hope more boats will be able to compete on the non-holiday weekend. A great program is planned both on and off the water. Look for more details on a following page in this issue.

The Frying Pan Race on Friday evening, August 29th is one of the "must do" classics here on Lake Winnepesaukee. Find a friend to crew and come out for this double handed race twice around Welch Island.

We are pleased to see the folks at the Wolfeboro Corinthian Yacht Club announce their plan to put on a race event once again. They will provide a convenient way to keep your boat in Wolfeboro overnight. Plan on making the trip and enjoy their fine hospitality as well as some great racing in Wolfeboro on Saturday, September 6th. There is more detail later in this issue and a Notice of Race is posted on the website at www.lwsa.org.

Classified Advertising

Classified ads may be placed up to two weeks prior to publication dates. Cost is \$0.50 per word for members, \$1.00 per word for nonmembers. Make checks payable to LWSA, and remit with ad to LWSA PO Box 7047, Gilford, NH 03247.



LWSA Executive Board

Al Posnack, Commodore
Pete Crosby, Vice Commodore
Steve Coneys, Rear Commodore
Wendy Wilson, Secretary
Alan Kanegsberg, Treasurer

LWSA Committees

Bob Knowles, Race Committee
Peter Crosby, Youth Sailing
Ed Philpot, Junior Club
Jeff Kirchoff, One Design
Bob Knowles, "Broad Reach"
Bryan Marshall, PHRF
Bob Lemaire, Web Master

The Broad Reach is a publication of the Lake Winnepesaukee Sailing Association (LWSA), PO Box 7047 Gilford, NH 03247. It is circulated to fulfill our non-profit charter which is "...to encourage the sport of sailing..". Each issue costs approximately \$250 to produce. If you are receiving these issues as a member, we thank you for your support. If you are not a member, we ask that you consider a tax deductible membership [501(c)(3)] to help us defray publication costs. Thank you.

The Broad Reach is published occasionally during the sailing season. All materials for publication are due by the 7th of the month. Publication or use of any material from The Broad Reach is not authorized without written permission. Further, The Broad Reach and LWSA disclaim responsibility for typographical errors other than the obligation to print a notice of correction.

Submit materials by email to The Editor, Bob Knowles Email: robtk@worldpath.net

<u>Size</u>	<u>1 Issue</u>
1/2 Page	\$100
1/3 Page	\$75
1/6 Page	\$50

The Broad Reach is circulated to more than four hundred Lakes Region sailors and sailing enthusiasts. Commercial support for The LWSA, a non-profit organization, can be acknowledged with space advertising according to the above schedule. To place an advertisement contact the editor: Bob Knowles at 603-279-8405.

Memorial Day Race - An Epic

The renamed Glendale Tavern Memorial Day Cup finally got into the history books on Saturday, June 21st, some four weeks after the first postponement on that rainy Memorial Day weekend. A second try to run the race on June 7th was also postponed due to lack of wind.

Of the 25 boats that had originally registered for the event, only 14 were able to attend on the June 21st date. The day was rain free, a rare occurrence this past spring. There was initially little breeze as the boats gathered for the start but after a brief delay, a nice 8 - 10 kt wind line worked itself in from the southeast. A 9.6-mile course was to take the fleet twice around the windward mark set off the southwest tip of Diamond Island. Tom Sullivan's Ensign, Hi Ho, was first to start followed some 28 minutes later by Jesse Thompson with Hot Tub. In between the other boats were off at their prescribed delay start times. The reverse start concept reduces congestion at the start line but of course the concept predicts that all boats "should" finish at the same time. This is never the case however.

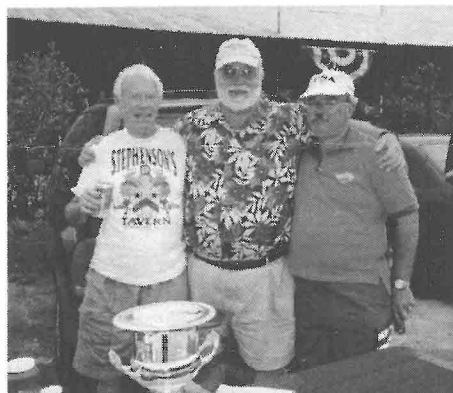
In the racing division, Mail Order Bride maintained a lead up to the second rounding of the windward mark where Pinocchio took advantage of a favorable wind shift, rounded the mark first and then covered their lead position downwind to the first overall to finish. In the cruising division, it also took until the second windward mark for Safire to overcome the cruising fleet that had started ahead of her only to in turn be passed by Hot Tub with only a half mile to go to the finish. The final order of finish for what turned out to be a good day on the racecourse is shown in the adjacent table.

The folks at the Glendale Tavern graciously put on well attended social hours after each of the first two race postponements but were surprisingly out of business just days before our third attempt and finally successful running of the holiday classic. Thanks to Tom Mullen for organizing this year's event and especially so for regrouping the sponsorship in just a few days prior to the race. Capitol Distributors, distributors of Coors, stepped up and assumed the lead sponsorship replacing the now defunct

Glendale Tavern. The people at Capitol have indicated that they will be our key sponsor again next year. Also a special thanks to co-sponsors, Bruce and Nancy

Massie. Be sure to visit their salon, Headlines, *Creative Hair*, located at 37 Glendale Place just off of Rt. 11 in Gilford.

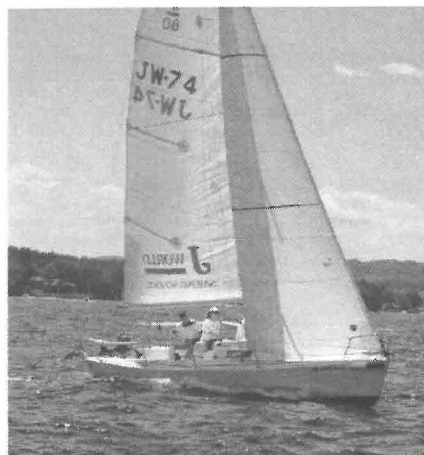
Place	Division	Boat Name	Skipper	Total time
1	R	Pinocchio	Knowles	2:17:53
2	R	Argo III	Nickerson	2:19:16
3	R	Mail Order Bride	Pratt	2:20:05
4	R	Shamrock IV	Mullen	2:20:42
5	R	Panic Attack	Philpot	2:25:00
6	C	Hot Tub	Thompson	2:25:16
7	R	Jolly Mon	Rochlis	2:25:49
8	C	Safire	Lapointe	2:26:37
9	C	Lily Pad	Saliga	2:27:15
10	C	Haleakala	Garland	2:38:38
11	R	Hi Ho	Sullivan	2:40:06
12	C	Babe II	Nigl	2:50:33
13	C	Full Sails	Moccia	3:04:00
14	C	Vann Ann	Wendell	3:10:00



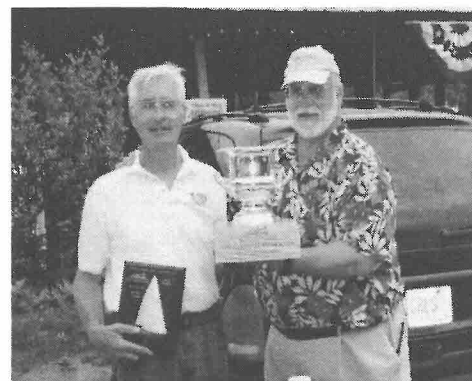
Tom Mullen thanks the Race Committee - Jack Stephenson and Past Commodore Chris Rich



The entertainment - Terry Pratt, Tom Mullen, and Casey Nickerson



Jon Rochlis and Ann Lavin enjoying their new J80



Bob Knowles accepts the first Memorial Day Cup

Youth Sailing News

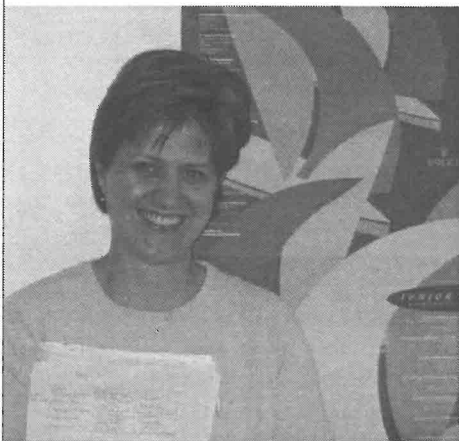
This year's youth sailing season started with a two-day racing clinic conducted by All-American racer Chris Ashley from Vanguard Boats, followed by three more days of racing drills conducted by our head instructor, Charlie Wardwell.

In spite of our modest facility, this is an elite program with an outstanding staff. Head instructor Charlie says they are the best group he has ever worked with. Returning instructors Katie Kuzdzal and Katie McMenamem are joined by three hotshots who have come up thru our own program – Celia Johnson, Liz Wilson and Tim Fernholz. If you see them, thank them for a great job. They work hard!

Helping the instructors are a hot crew of "JI's" – Junior Instructors. Their help is especially important when we have a large group of novice sailors on the water.

On the racing front, we are running races for the more advanced youngsters on Wednesday nights, and have added skills drills on Mondays. Importantly we have sent several crews to off-the-lake events. Liz Wilson and Owen Carey-Hatch won the first round of the Bemis Championship eliminations on Lake Champlain, and competed in the Northeast Sailing Association championships in Kennebunkport.

Unsung Hero – When Jane Fernholz agreed to handle youth sailing registrations, she didn't know what she was in for. After 500-plus phone calls, and countless emails, letters, registration forms and checks, she is just now catching her breath. **THANKS, JANE!!!!!!**



Additionally, Ian Gilchrist, Graham Philpot and Tim Fernholz have competed in off-the-lake events, and Parker Tuan and Chip Veazey will be attending the Midget eliminations at Lake Sunapee in August.



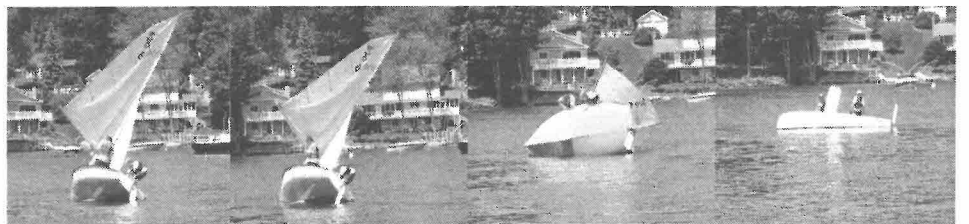
Junior instructors Ben Tyler, Chip Veazey, Jason Kephart, Julian Gilchrist, Graham Philpot, Ian Gilchrist, Owen Carey-Hatch.



Head Instructor Charlie Wardwell.



All-American Chris Ashley conducts roll-tacking drills on a no-wind day.



Sometime a roll tack is not so pretty!



Our kids are right on the line for the starts with close finishes

LAKE WINNIPESAUKEE SAILING ASSOCIATION 14th ANNUAL LWSA REGATTA

Saturday - Sunday, August 23-24, 2003

The LAKE WINNIPESAUKEE SAILING ASSOCIATION (LWSA), cordially invites you to participate in our 14th Annual Regatta. If you have never participated in a regatta before, this is the one to try.

Early registration is requested (there is an additional discount of \$10.00 before 8/16). Final registration will close at 10 AM on Saturday 8/23. The Skippers' Meeting will be held at 10:30 Saturday morning at Fay's Boat Yard in Gilford. There will be multiple classes subdivided into racing classes that can use spinnakers and cruising classes that are limited to flying headsails. The number of classes will be determined by the spread of the PHRF ratings of the registrants. J80 Fleet 1 will race as a one design class within the racing class..

The racing on Saturday will include as many windward-leeward races as conditions permit for the Racing Classes and triangle courses for the Cruising Classes. Cruising classes may

be sent on island courses if conditions warrant.

Sunday's race will be a single long distance island race using a reverse start sequence.

Boats may choose to race both days or just for either one of the two days. Just indicate on the entry form what you intend to do. There will be separate awards given for each day's results.

All boats will be rated using the PHRF handicap system. If you don't have a rating certificate, please call (860) 536-9259 weeknights to request a temporary PHRF rating. The PHRF Handicapper will issue a temporary certificate just for this event.

Entry is limited to sailing vessels 20 feet or longer. We will be sailing under USSA Rules and LWSA Sailing Instructions (copies will be available at the Skippers' Meeting). We suggest that you have a copy on board. You

are, of course, required to have the normal safety equipment on hand.

A limited number of moorings are available at Fay's Boat Yard for the weekend on a first-come, first-served basis. If you need dockage, please contact Fay's Boat Yard directly.

On Saturday evening following the racing, there will be a social and awards ceremony at a yet to be confirmed location. On Sunday afternoon immediately following the race there will be a social hour with beer, soda, and munchies available at Fay's Boat Yard.

The Notice of Race and an Official Entry Form is available on the LWSA website at www.lwsa.org. Please fill it out and return it at your earliest opportunity to the LWSA at the address indicated.

On behalf of the Race Committee, and The LWSA, we look forward to seeing you.

Bob Knowles, Race Chairman
Steve Coneys, Rear Commodore

SCHEDULE OF EVENTS

Saturday, August 23, 2003

- 1000 - Final registration closes for all boats ("Rec Room" Fay's Boat Yard)
- 1030 - Skippers' Meeting ("Rec Room" Fay's Boat Yard)
- 1230 - Starting Sequence begins (south of Welch Island)
Races will be run around buoys. Cruising Classes may do an Island Course
- 1800 - Social Gathering (Site to be announced)
- 1900 - Awards Ceremony

Sunday, August 24, 2003

- 1030 - Skipper's Meeting ("Rec Room" Fay's Boat Yard)
- 1230 - Starting Sequence begins (between Welch Island and Gilford shore)
Race will be on an island course.
- 1700 - Social with beer, soda, munchies (Fay's Boat Yard)
- 1800 - Awards Ceremony

2003 WYC Jimmy Fund Race

class	boat name	skipper	boat	sail #	phrf	TCF end time	sed time	ted time	position	
non-spin	hi ho	sullivan	ensign	1508	282	0.78125	2:08:33	2:08:33	1:40:26	1
non-spin	lilly pad	saliga	hunter 29		204	0.86207	1:58:18	1:58:18	1:41:59	2
non-spin	saphire	lapointe	c&c 36	74971	147	0.93257	1:50:27	1:50:27	1:43:00	3
non-spin	blueberry pie	spaulding	catalina 27	3080	237	0.82592	2:09:19	2:09:19	1:46:48	4
non-spin	halliakali	garland	catalina 34	658	168	0.90529	2:01:08	2:01:08	1:49:40	5
non-spin	serenity	richardson	sea sprite 23		282	0.78125	2:21:40	2:21:40	1:50:41	6
non-spin	makin time	coney	pearson 33	23	174	0.89779	2:03:41	2:03:41	1:51:02	7

island race	coherent	sibson	laser 28	157	129	0.95729	1:36:12	1:36:12	1:32:05	1
island race	totam	selig	sj 30	21855	162	0.91292	1:42:48	1:42:48	1:33:51	2
island race	leading indicator	thiebault	j 24	168		0.90529	1:48:13	1:48:13	1:37:58	3
island race	kismet	balkus	ultimate 20	155	144	0.9366	1:58:54	1:58:54	1:51:22	4

class	boat name	skipper	boat	sail #	phrf	race 1	race 2	race 3	total	position
racing	pinocchio	knowles	j 80	52	120	1	1	1	3	1
racing	argo III	nickerson	j 80	485	120	6	3	2	11	2
racing	mail order bride	pratt	b25	44	138	2	6	3	11	3
racing	panic a-tack	gilchrist	j 80	154	120	4	2	7	13	4
racing	gostosa	hayes	j 80	265	120	3	5	6	14	5
racing	shamrock IV	mullen	j 80	16	120	5	4	5	14	6
racing	jolly mon	rochlis	j 80	484	120	8	8	4	20	7
racing	full tilt	bahr	ultimate 20	60	144	9	7	8	24	8
racing	sunbear	crosby	f 27	27011	30	10	9	9	28	9
racing	hot tub	thompson	evelyn 32	32170	96	7	11	11	29	10

2003 WYC Commodore's Cup

class	boat name	skipper	boat	phrf	R 1	R 2	R 3	R 4	R 5	R 6	R 7	R 8	Total	Place
race	pinocchio	knowles	j 80	120	2	1	6	1	7	1	2	6	26	1
race	full tilt	bahr	ultimate 20	144	1	3	1	7	3	4	3	7	29	2
race	gostosa	kirchhoff	j 80	120	5	2	4	6	4	5	1	3	30	3
race	coherent	sibson	laser 28	129	3	8	7	4	2	3	4	2	33	4
race	mail order bride	pratt	b25	138	8	5	5	2	6	2	6	1	35	5
race	schatz	herte	j 80	120	7	6	8	3	1	6	5	4	40	6
race	argo III	nickerson	j 80	120	6	7	3	5	5	7	7	5	45	7
race	the office	coney	j 80	120	4	4	2	9	9	9	9	9	55	8

class	boat name	skipper	boat	phrf	R 1	R 2	Total	Place
isl race	flying colors	curtis	capri 25 / cc25	180 / 225	2	1	3	1
isl race	finishing touch	egan	j 24	168	3	2	5	2
isl race	anticipation	parsons	capri 22	201	1	5	6	3
isl race	totam	selig	sj 30	162	5	5	10	4

class	boat name	skipper	boat	phrf	R 1	R 2	Total	Place
cruise	serenity	richardson	sea sprite	282	1	1	2	1
cruise	all angles	angle	oday 27 ob	219	2	2	4	2
cruise	kindred spirit	fay	sea sprite	282	3	3	6	3
cruise	shock	smart	santana 20	234	4	4	8	4

Youth Sailing Commodore's Cup

Lasers

- Katie McMenemen
- Ian Gilchrist
- Graham Philpot

Optimist

- Juliann Gilchrist
- Harrison Fontaine
- Gates Lucas

420's

- Graham Philpot / Ian Gilchrist
- Owen Carey-Hatch / Liz Wilson
- Greg White / Lincoln Lucas

Sportsmanship Award went to Rosie Philpot

NOTICE OF RACE

Double Handed Frying Pan Race

Friday, August 29, 2003

- 1. RULES:** The race will be governed by *The Racing Rules of Sailing (2001–2004)*, the prescriptions of US Sailing, the rules of PHRF New England, the LWSA/WYC Combined sailing instruction for the 2003 season, and any other applicable rules
- 2. ELIGIBILITY:** Any boat over 20 feet possessing a current PHRF certificate may participate. A non protestable temporary PHRF rating may be granted to any boat not having a current rating. Boats racing after sunset must illuminate their navigation lights in order to continue or withdraw and return to their docking location.. This is a double-handed event. Boats are restricted to a Skipper and one crewmember.
- 3. ENTRY & FEES:** Boats must register by submitting a completed Entry Form along with the entry fee of \$15 (\$10 for US Sailing members). Registration is at 1700 Friday, August 29, 2003 at Fay's Boat Yard.
- 4. CLASSES:** Boats must register to compete in either the Racing or Cruising Division. Cruising class may not use spinnakers.
- 5. RACING AREA:** The race will be started southwest of Welch Island.
- 6. COURSES:** The course is traditionally twice around Welch Island. The race committee may shorten the course to once around by displaying code flag S before the first boat passes the Start/Finish line.
- 7. SCHEDULE:**
Friday August 29, 2003
1630-1700 Registration & Skippers Meet
1800 Warning Signal
- 8. SKIPPERS MEETING:** A Skippers Meeting will be held at Fay's Main Dock per the schedule to reiterate information contained in the Notice of Race and Sailing Instructions and to answer any questions.
- 9. SCORING SYSTEM:** Finishing position is determined by corrected PHRF time using the time on time scoring system.

AWARDS: The winner of each division will enjoy the distinction of having their accomplishment recorded on the perpetual "Frying Pan" trophies that hang in the Fay's Boat Yard Chandlery.

Old Timer's Race Saturday, August 9, 2003

The LWSA cordially invites you to participate in an "Old Timer's Race" on Saturday, August 9th. The event is open to any skipper with a 30-foot or longer boat and a helmsman who is 50 or older. If you look to be over 50 you can drive! The idea is to get as many of the older big boats to come out with a full crew to have some fun with an around the islands race followed later by a social get together. We welcome racers and cruisers. Fly your spinnaker or just a headsail. There will be no registration fee or skipper's meeting. Just show up out on the water off of Welch Island for a 1300 hours start. We will do the rest.

If you have not been out with the other boats for some time, this is the day to get some old friends together and come on out. We really hope you will join in for a fun afternoon. Please call 603 279-8405 or e-mail bobknow@metrocast.net for all the details. You can view the Notice of Race and download a registration form at www.lwsa.org. You should let us know that you plan to participate and if you require help to get crew.

Wolfeboro Corinthian Yacht Club to host Regatta Saturday, September 6, 2003

After a few too many years, it is a pleasure to announce that the Wolfeboro Corinthian Yacht Club, WCYC, is planning to hold a day of racing down in Wolfeboro on Saturday, September 6, 2003. Participants may bring their boats to the WCYC on Friday afternoon where no charge docking or mooring will be available. Participants will not be permitted to stay on their boats overnight. Racing classes will be provided for PHRF boats, both spinnaker and non-spinnaker, and for One Design boats, J80 and Ensign. The WCYC will host a social and awards presentation at their clubroom following the racing on Saturday afternoon. The entrance fee will be \$25 with proceeds going to the Youth Sailing program in Wolfeboro. The Notice of Race can be found on the LWSA website at www.lwsa.org/2003_racing_schedule.htm. The winds are usually just right in early September, so plan on making the trip and be part of a renewed effort to have formal racing again in Wolfeboro.

Boats For Sale

The LWSA has the following donated boats available. Since our goal is to help both the LWSA and the buyer, these are priced below market. Multi-year payment terms available. Please call Terry Pratt at 293-4239 for detailed information.

O'Day 27 – Fast, comfortable and extremely well equipped.

Islander 28 – A roomy inboard cruiser.

O'Day 25 — Immaculate shoal draft cruiser with trailer.

Evelyn 25 — Ready to race.

Wanted -- Lightweight trailer to store sailing school's 15 foot motorboat. Needs to travel 2 miles per year.



Screen Printing
Embroidery
Promotional Items

800-825-7512

128B Hall St. Concord, NH

Tel: (603) 293-8000

Fax: (603) 293-0323



WAYNE C. BARTON

Complete Sailboat Service

www.faysboatyard.com

wayne.barton@faysboatyard.com

71 Varney Point Rd.

Gilford, NH 03249



293-8847

DAVE'S
MOTORBOAT
SHOPPE, LLC

Cobra

merCruiser

On Lake Winnepesaukee

Rt. 11B, 229 Intervale Rd.
Gilford, N.H. 03246

DAVID EWING

Headlines *Creative hair*

37 Glendale Place
Rt. 11, Gilford
293-8094

Wendy

Nancy

Postmaster: Return Service Requested

August 2003

Gilford, NH 03247-7047

P.O. Box 7047



FIRST CLASS
US POSTAGE PAID
CONCORD, NH
PERMIT #1603